

ELx405™ Microplate Washer

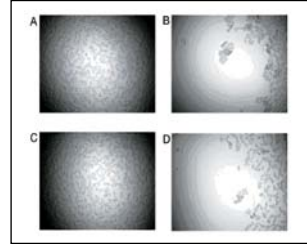


The ELx405™ Microplate Washer has set the standard in microplate washing based on its superior performance and reliability. This fourth generation product offers several models and options for processing 96- and 384-well microplates to meet all throughput requirements in both standard and deep well heights. The unique patent-pending Ultrasonic Advantage™ option eliminates the number one cause of assay failure - clogged manifold tubes. Valuable time is saved with this automated maintenance capability. All ELx405 models can be configured with biomagnetic separation and vacuum filtration modules for full plate washing of magnetic and polystyrene bead-based assays such as Luminex® xMAP®.

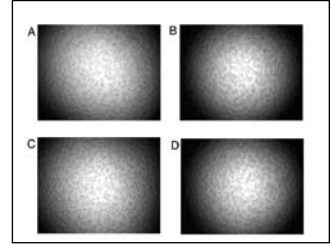
Programming the ELx405 is easy through its simple keypad interface. For those who prefer the advantages of running instruments via computer control, the ELx405 can be controlled with BioTek's optional Liquid Handling Control™ Software. The optional BioStack™ is available for walk-away automation of up to 50 standard height microplates.



Enhanced Cell Washing:



Before (A/C) and after (B/D) washing two wells containing HEK cells using a standard dispense rate.



Before (A/C) and after (B/D) washing two wells containing HEK cells using an ELx405 Select CW low flow dispense rate.



Features:

- Magnetic and polystyrene bead assays along with standard ELISAs
- 96- and 384-well standard and deep well microplates
- Patented Dual-Action™ manifold
- The ELx405 HT is the fastest 384-well plate washer available, designed to enhance high throughput operations
- Extensive onboard software includes independent control of plate position during dispense and aspiration cycles as well as fully programmable fluid volumes and flow rates, shaking, and soaking to lower the CVs of your assay
- Super low rates in the ELx405 Select CW provide gentle dispense for non-disruptive cell washing
- Built-in ultrasonic cleaner
- Easy maintenance with a selection of pre-programmed routines that ensure problem-free operation
- Fluid detection, fluid flow and vacuum sensors provide complete protection during unattended operations



Model	Part #	96-well only	96-/384-well	384-well only	Deep well	Cell wash	Wash buffer switch	Ultra Adv	Mag bead	Vac Filter
ELx405™	ELX405R	●								
	ELX405RM	●							●	
	ELX405RMF	●							●	●
	ELX405RS	●						●		
	ELX405RSM	●						●	●	
	ELX405RSMF	●						●	●	●
	ELX405VR	●						●		
	ELX405VRS	●						●	●	
	ELX405VRSM	●						●	●	●
ELx405™ Select	ELX405U		●							
	ELx405UD		●		●				●	
	ELX405UM		●						●	
	ELX405UMF		●						●	●
	ELX405US		●					●		
	ELX405USD		●		●			●	●	
	ELX405UV		●					●		
	ELX405UVD		●		●			●	●	
	ELX405UVS		●					●	●	
	ELX405UVSD		●		●			●	●	●
	ELX405UCW		●			●				
	ELX405UCWD		●		●	●			●	
	ELX405UCWS		●			●		●		
	ELX405UCWSD		●		●	●		●	●	
	ELX405UCWSMF		●			●		●	●	●
	ELX405UCWVD		●		●	●	●		●	
	ELX405UCWVS		●			●		●		
	ELX405UCWVSD		●		●	●	●	●	●	
ELX405UCWVSM		●			●		●	●		
ELx405™ HT	ELX405HT			●						
	ELX405HTM			●					●	
	ELX405HTMF			●					●	●
	ELX405HTS			●				●		
	ELX405HTV			●			●			
	ELX405HTVS			●			●	●		
	ELX405HT2		●							
	ELX405HT2S		●					●		
	ELX405HTV2		●				●			
	ELX405HTV2S		●				●	●		
	ELX405HTV2SM		●				●	●	●	

Specifications:

Assays:	ELISA Magnetic and polystyrene bead Multiplex assays Bead-based ELISAs Cell-based assays
Microplate Types:	96- and 384-well (<i>model dependent</i>) Low profile and standard height Deep well up to 50 mm (<i>model dependent</i>)
Magnet:	Choice of high strength, flat or ring designs 96- and 384-well formats
Manifold Type:	96-well washing - 96-tube (8x12) 96-/384-well washing - Dual-Action™ 96-tube (8x12) 384-well washing - Dual-Action™ 192-tube (16x12)
Washing Speed:	96-well (96-tube manifold) - <30 sec: 3 asp./disp. cycles, 300 µL/well 384-well (192-tube manifold) - <20 sec: 1 asp./disp. cycle, 400 µL/well
Wash Cycles:	1 - 10
Volume Range:	25 - 3000 µL/well (<i>model dependent</i>)
Fluid Delivery:	Internal positive displacement pump
Buffer Selection:	Optional switching of up to 4 wash buffers
Dispense Precision:	≤3% CV
Residual Volume:	≤2 µL/well
Onboard Software:	2x24 character backlit LCD display
Software:	Optional LHC™ Software for wash protocol programming and execution
Soak Time:	1 - 600 seconds
Shaking:	User-programmable speeds and timing
Sterilization:	Chemical
Dimensions:	Depth: 17" (43.2 cm) Width: 14" (35.6 cm) Height: 10" (25.4 cm) - 405, 405 Select, 405 HT 11" (27.9 cm) - 405 Select Deep Well
Weight:	30 lbs (13.5 kg)
Power:	100 - 240 Volts AC 50/60 Hz

*Specifications subject to change

Note: High flow vacuum pump recommended for 384-well washing with buffers not containing surfactant.

Optional Accessories:

- Magnets – choice of 96- or 384-well formats
- Dispense/Waste Systems – choice of 4L or 10L bottles and standard or high flow vacuum pumps
- Direct Drain Waste System
- Product Qualification Package
- BioStack™ Microplate Stacker
- Liquid Handling Control™ Software



BioTek Instruments, Inc.
Highland Park, P.O. Box 998
Winooski, Vermont 05404-0998, USA
Tel: 802-655-4040 • Toll-Free: 888-451-5171
Outside the USA: 802-655-4740 • Fax: 802-655-7941



The ELx405 is Luminex® xMAP® approved.

www.biotek.com

Rev. 6/14/11